

THE GLOBAL MANUFACTURING HUB

Built for Scale. Trusted for Precision.



**NEXT MOVE
GROUP**

nextmovegroupexport.com

*The strategic sourcing partner behind modern
apparel brands.*

WHO WE ARE

Global apparel sourcing is complex — inconsistent quality, unreliable timelines, and fragmented supply chains.

We solve that.

At Next Move Group, we act as your on-ground manufacturing partner in India, connecting you directly with Tier-1 production facilities across the country's most advanced textile hubs.

We don't just source garments.

We build scalable, reliable supply chains for growing brands

WHAT MAKES US DIFFERENT

Direct Factory Access

Work directly with vetted Tier-1 manufacturers — no middle layers, no compromise.

Engineered Consistency

Standardized quality control across every production stage.

Scalable Production

From small brand launches to large retail volumes.

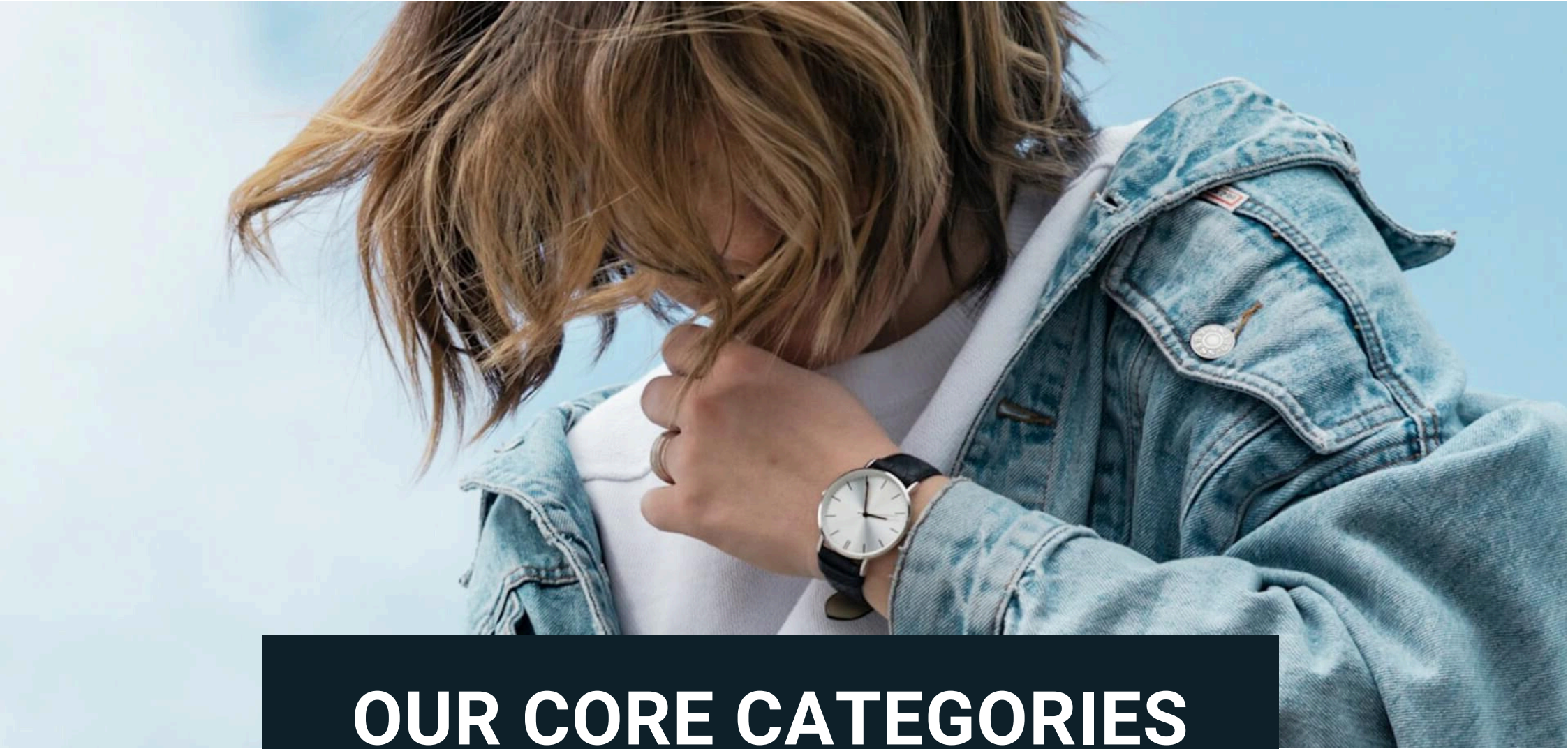
Category Expertise

Denim, Shirts, Knitwear, Activewear, and Uniform Programs — all under one network.

End-to-End Execution

Sampling → Development → Production → Finishing → Delivery





OUR CORE CATEGORIES

THE DENIM GALLERY

Premium utility wear crafted for durability and style.

4-5
Page

PROFESSIONAL & SEASONAL SHIRTS

Tailored excellence for every climate.

6-7
Page

KNITWEAR & ESSENTIALS

Ultra-soft, breathable apparel designed for the modern lifestyle.

8-9
Page

ACTIVWEAR & PERFORMANCE COLLECTION

High-recovery synthetic and moisture-management apparel designed for elite athletic performance.

10-11
Page

UNIFORM HUB

1.SHIRTING & SUITING: THE GOLD STANDARD

The professional silhouette by combining India's "Big Five" textiles with high-precision 15-16 SPI tailoring.

2.HEALTHCARE UNIFORM SOLUTIONS

Specialized medical apparel engineered for the hygiene standards of global healthcare networks.

12-14
Page

3.EXECUTIVE POLOS

Performance wear that survives the heat and the rigors of the industrial warehouse without losing its professional edge.

DENIM COLLECTION

Our Denim Gallery is a masterclass in utility and style. We source high-grade denim that balances rugged durability with a refined, modern silhouette.

- Premium utility wear crafted for durability and style.
- Diverse Fits: From timeless Regular and Slim fits to on-trend Mom-fit and High-rise styles.
- The Signature Series: Featuring custom Mudd, Acid, and Vintage washes for an authentic "worn-in" feel.
- Built to Last: Every piece features YKK zippers, anti-corrosive shanks, and reinforced stitching.
- Utility Staples: Hard-wearing Denim Overshirts and Cargo Bermuda Shorts.



OVERSHIRTS

A versatile, rugged piece that blends the structure of a jacket with the relaxed feel of a shirt. Designed for layering, it offers a slightly oversized fit, making it perfect for throwing over t-shirts or sweaters.



CARGO SHORTS

A stylish and functional twist on the classic Bermuda style, blending the rugged appeal of denim with the practicality of cargo pockets. These knee-length shorts offer a relaxed, comfortable fit, perfect for casual outings or outdoor adventures.



MUDD WASHED

feature a distinct, faded look with subtle highlights and lowlights for a worn-in, vintage vibe.



MOM FIT

offers a trendy, high-waisted style with a relaxed fit through the hips and tapered legs



REGULAR FIT

Offer a timeless straight-leg silhouette with a comfortable mid-rise waist and relaxed hipto-thigh fit



SLIM FIT

Feature a modern, tapered silhouette with a close-to-thebody fit through the hip and thigh



RELAXED FIT

Offer a loose, comfortable silhouette with extra room through the hip and thigh



LOW RISE FIT

A flattering waistline that sits below the natural waist, offering a modern, trendy silhouette with a snug hip fit



JOGGER FIT

Combine the casual comfort of joggers with the rugged look of denim



RIPPED JEANS

A trendy distressed design with intentional tears and abrasions



SKINNY FIT

Offer a snug, body-hugging silhouette from waist to ankle, crafted from stretch denim for maximum comfort



PROFESSIONAL & SEASONAL SHIRTS

Our shirt collection is designed to be the backbone of any wardrobe, offering a perfect balance between sophisticated aesthetics and functional durability. We specialize in high-quality fabrications that cater to diverse global markets and climates.

Our Core Shirt Categories

- **Professional & Executive:** Crafted from premium Oxford Cotton and Satin weaves, these shirts feature structured collars and highthread-count finishes for a sharp, authoritative look.
- **Performance & Stretch:** Utilizing Cotton Lycra and Polyester blends, these shirts offer a modern, tailored fit with four-way stretch, ideal for the active professional who demands comfort without sacrificing style.
- **Seasonal & Heavyweight:** Our collection includes rugged Flannels, Corduroy, and Wool blends, designed for warmth, texture, and layering during cooler seasons.
- **The Utility Series:** Hard-wearing Denim Overshirts and Cargo styles built with reinforced stitching and industrial-grade hardware for the ultimate casual-utility look.



OXFORD SOLID



OXFORD CHECKS



OXFORD STRIPES



LINEN SHIRTS



CANVAS SHIRTS



TWILL SHIRTS



CORDUROY SHIRTS



SATIN SHIRTS



FLANNEL SHIRTS

Our Core Shirt Categories

- **Professional & Executive:** Crafted from premium Oxford Cotton and Satin weaves, these shirts feature structured collars and high-thread-count finishes for a sharp, authoritative look.
- **Performance & Stretch:** Utilizing Cotton Lycra and Polyester blends, these shirts offer a modern, tailored fit with stretch, ideal for the active professional who demands comfort without sacrificing style.
- **Seasonal & Heavyweight:** Our collection includes rugged Flannels, Corduroy, and Wool blends, designed for warmth, texture, and layering during cooler seasons.
- **The Utility Series:** Hard-wearing Denim Overshirts and Cargo styles built with reinforced stitching and industrial-grade hardware for the ultimate casual-utility look.



Knitwear & Essentials

Everyday Comfort, Engineered for Longevity

Our Knitwear & Essentials collection focuses on the foundation of the modern wardrobe. We specialize in high-quality circular and flat-knit fabrics that offer a soft hand-feel, superior breathability, and "recovery" (the ability to hold shape after multiple washes).

Core Knit Categories

1. The Signature Tee Series

Fabric: 100% Combed Organic Cotton (160–220 GSM).

Styles: Crew Neck, V-Neck, and Oversized Heavyweight Tees.

Detailing: Double-needle stitching and shoulder-to-shoulder taping for structural integrity.

2. Performance Polos

Fabric: Piqué Knit or Pima Cotton blends.

Styles: Classic 3-button plackets with reinforced "no-curl" collars.

Detailing: Side-slit hems and high-density embroidery options for branding.

3. Fleece & Terry (The Loungewear Suite)

Fabric: Heavyweight French Terry or Brushed Fleece (300 GSM).

Styles: Hoodies, Joggers, and Quarter-Zip Pullovers.

Detailing: Pre-shrunk fabrics with high-ribbed cuffs and silicon-dipped drawstrings



REGULAR FIT



LOOSE FIT



OVERSIZED FIT



HOODIES



SWEATSHIRT



BOXY FIT



POLO



FITTED T-SHIRT



REGULAR FIT PANTS



LOOSE FIT PANTS



REGULAR FIT SHORTS



RELAXED FIT SHORTS

Activewear & Performance Collection

Our activewear is strictly engineered using high-performance synthetic fibers. We utilize 100% Polyester, Nylon, and Elastane blends to ensure superior moisture management, durability, and a 4-way stretch that moves with the body. Note: No cotton or cotton-blend fabrics are used in this production line.

Performance Tops & Outerwear

- Round Neck T-Shirts: Lightweight and breathable, constructed from Polyester Dry-fit or Single Jersey synthetic knits. Polo T-Shirts: Professional athletic wear in Knitted Piqué or Interlock Polyester, featuring reinforced collars.
- GSM Range: Options available from 140–160 GSM for high-intensity training to 180–220 GSM for premium feel.
- Jackets: Durable outerwear with reinforced seams and full-zip closures for outdoor or warm-up use.

Technical Bottoms

- Track Pants & Joggers: Engineered with 220–280 GSM 4-way stretch Polyester and Elastane fabric for maximum flexibility and shape recovery.
- Dri-Fit Shorts: High-ventilation Polyester Dry-fit or Interlock with optional inner linings for sports-specific support.
- Tights: Compression-fit designs utilizing high-performance Polyester Spandex or NylonSpandex blends.

Specialized Swimming Wear

- Fabric Composition: High-grade Nylon and Elastane (Spandex) blends.
- Key Benefits: Chlorine resistance, low water absorption, and superior 4-way stretch for streamlined performance.

Manufacturing & Quality Standards

- Construction: Utilizing Flatlock and Overlock stitching to eliminate friction and increase seam longevity under tension.
- Features: Includes Elastic waistbands with Polyester drawstrings and secure zip pockets.





DRI-FIT T-SHIRTS



LONG SLEEVE



SLEEVELESS VESTS



TRACK JACKET



DRI-FIT SHORTS



TRACK PANTS



LAYERED SHORTS



**COMPRESSION FIT
LONG SLEEVED**



**COMPRESSION FIT
RUNNING TIGHTS**



SHIRTING & SUITING: THE GOLD STANDARD

Executive Tailoring Meets Industrial Durability

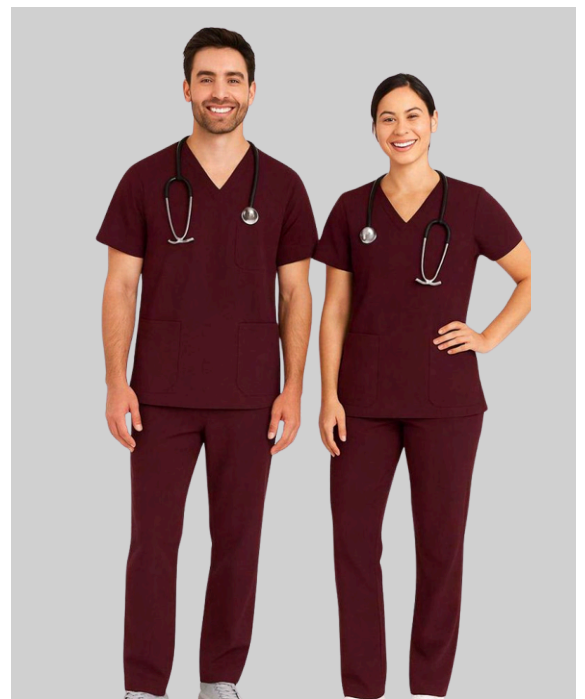
We redefine the professional silhouette by combining India's "Big Five" textiles with high-precision 14-16 SPI tailoring. The result: garments that command respect in the boardroom and survive the rigors of the workplace.

A. EXECUTIVE SHIRTING

- The Fabric: Direct-sourced Siyaram's Unicode and Wocky Tocky Urbane. High-count cotton blends with "permanent-press" crispness.
- The Engineering: Crafted at our Bangalore Hub using German machinery. 14-16 SPI finishing ensures pucker-free seams and collars that hold their shape after 50+ washes.
- The Selection: Premium weaves including Fil-a-Fil, Oxford, and Twills for Corporate, Medical, and Academic leaders.

B. TECHNICAL SUITING & TROUSERS

- The Fabric: Siyaram's luxury blends for executives and Valji's high-durability P.V. for rugged institutional use. High pilling resistance and deep color-fastness.
- The Engineering: Reinforced stress-point stitching and premium linings. Ergonomic cuts designed for "All-Day Comfort" and a sharp, professional drape.
- The Performance: Optimized for the GCC climate with advanced moisture management and soil-release finishes. Ideal for Hospitality, Aviation, and Corporate programs.



HEALTHCARE UNIFORM SOLUTIONS

Engineered for Patient Safety & Provider Excellence

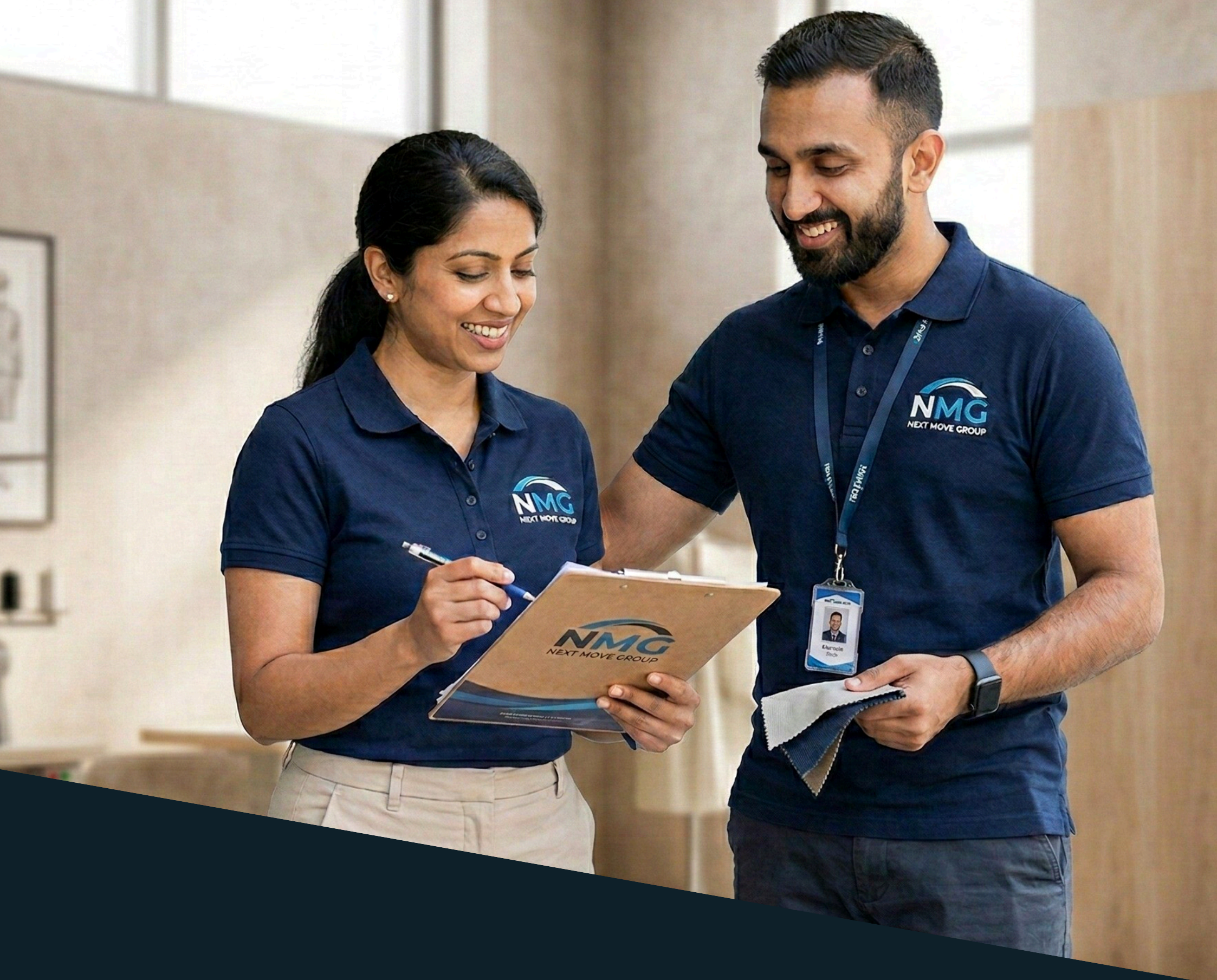
In a clinical environment, a uniform is a critical barrier. Next Move Uniform Hub delivers specialized medical apparel engineered for the hygiene standards of global healthcare networks.

The Technical Advantage: Wocky Tocky Wellness

- Antimicrobial Protection: Advanced silver-ion technology to inhibit pathogens and reduce cross-contamination.
- Fluid & Soil Release: High-performance finishes that repel blood, saline, and clinical fluids.
- Thermal Breathability: Moisture-wicking textiles to keep staff cool during high-pressure 12-hour shifts.

Specialized Clinical Range

- A. Professional Scrubs & O.T. Wear: Reinforced double-stitch construction with ergonomic utility pockets. Designed to withstand high-temperature sterilization without losing color.
- B. Executive Lab Coats: High-precision 18-SPI tailoring from our Bangalore Hub. Features lint-free, bleach-resistant wovens that maintain a "bright white" finish.
- C. Patient Care & Allied Staff: Soft-touch, non-irritant fabrics (Mafatlal/Valji) that balance patient comfort with a sharp, clinical aesthetic.



PERFORMANCE KNITS: THE MARS 200 SERIES

Retail-Grade Engineering for High-Activity Environments

At Next Move Uniform Hub, we build performance wear that survives the heat of the GCC and the rigors of the industrial warehouse without losing its professional edge.

The Technical Advantage: Pranera's MARS 200

- Super-Wick Technology: Rapid moisture evaporation to keep staff and students dry.
- UV-Shield Protection: Built-in UPF 50+ for superior outdoor safety.
- Anti-Odor Finish: Antimicrobial treatment for all-day freshness.
- Shape-Lock Construction: High-density knit that resists pilling and sagging after 50+ washes.

SPECIALIZED RANGE

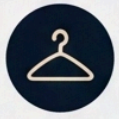
- Executive Polos: Features non-curl flat-knit collars and a "Retail-Standard" fit. Ideal for corporate branding and delivery teams.
- Institutional PE Kits: Engineered with flat-lock seams to prevent skin irritation during high-intensity sports.
- Industrial Knits: High-visibility and rugged pique options for logistics and field staff who require maximum mobility.

The Tiruppur Hub Advantage: Every piece is finished with high-definition embroidery or breathable heat-transfer printing for a premium brand look.

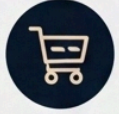


BUILT FOR GLOBAL BRANDS

We support:



Fashion & Apparel Brands



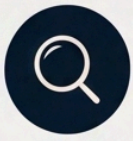
Retail Chains & Private Labels



Start-ups & Emerging Designers



Corporate & Institutional Buyers



OUR PROCESS

01

02

03

04

05



Concept & Sampling

Fabric selection, design development, prototyping



Production Planning

Factory allocation based on specialization



Manufacturing

Controlled execution with quality checkpoints



Finishing & Packaging

Retail-ready output with custom branding



Delivery

Streamlined logistics and export coordination



THE PARTNERSHIP ADVANTAGE



TRANSPARENT SOURCING

Full visibility at every step



RELIABLE TIMELINES

On-time delivery, every time



CONSISTENT QUALITY

International standards, every order



COMPETITIVE PRICING

Best value without compromise



LONG-TERM SCALABILITY

Growing with your business



WE DON'T JUST DELIVER PRODUCTS — WE DELIVER RELIABILITY.

PARTNER WITH US

Build Smarter. Scale Faster.

Access India's most trusted manufacturing network and take your brand to the next level.

Limited production capacity allocated per cycle.

CONTACT & INQUIRIES

- **Office:** 5/248-B, First Floor, Sana Bazar, Naranipuzha Road, Changaramkulam, Nannammukku PO, Malappuram DT, Kerala – 679575
- **Manufacturing Hubs:** Bangalore | Tiruppur | Delhi | Ludhiana | Jalandhar | Meerut |
- **Direct Inquiry:** business@nextmovegroupexport.com, nextmovegroups@gmail.com
- **Connect via Call/WhatsApp:** +91 7592 008 008 | +91 7593 005 006
- **Digital Showroom:** nextmovegroupexport.com

EXPORT REGISTRATION

IEC: EUHPM4454B

GSTIN: 32EUHPM4454B1ZW

Government Registered Export Entity — India



NEXT MOVE GROUP

